

Smlege

VOLCANO INTELLIGENT THERMOSTAT MANUAL



RT-V2



Volcano series is a thermostat for domestic water heating system, which can be used in underfloor heating system for individual room temperature control and individual household temperature control. By sensing the comparison between room temperature and set temperature, it can accurately control the operation status of the underfloor heating system and achieve the purpose of energy saving while improving the comfort.




This series of thermostats can not only be directly connected to thermal actuators and heat source equipment, but can also be combined with the base station to achieve a perfect system of centralised indoor temperature monitoring and control .

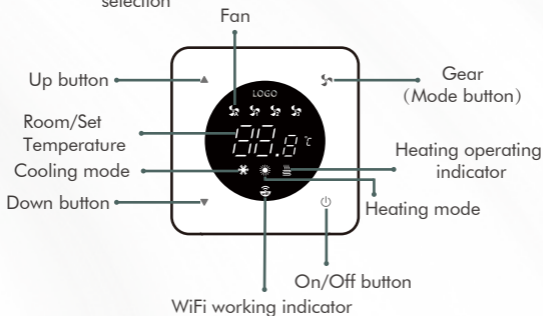
Technical parameters

- Model: RT-V2
- Voltage: 100-240VAC~ 50/60Hz
- Temperature control range: internal 5℃~35℃
- Temperature control accuracy: $\pm 1^\circ\text{C}$
- Temperature sensor: NTC
- Housing material: PC flame retardant
- Load current: 3A (MAX)
- Dimension: 86mmX86mmX12.8mm
- Color: White/Black/White&Black

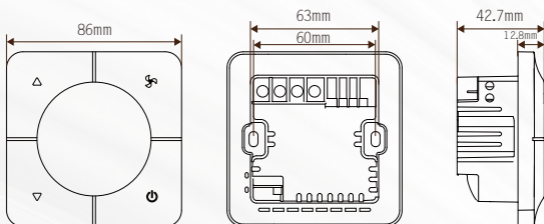
Functions and displays

In the power-on state, the user can operate as follows.

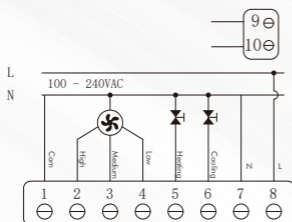
-  wind speed setting button: Short press to switch between four gears: automatic, low, medium and high.
-  On/Off button: Long press 1 second to turn on or off the power
-  Up/Down button: temperature adjustment and parameter selection



Dimensions



Electric connection



RT-V2

- 1: Com
- 2: High
- 3: Medium
- 4: Low
- 5: Heating
- 6: Cooling
- 7: N line
- 8: L line
- 9/10: Dry contact connection

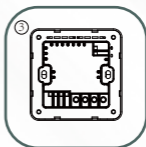
Installation



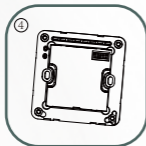
Disassemble the housing: use a 3.5mm wide straight screwdriver. Reach in along the seam and break it lightly to open the panel.



move the panel up and down to separate the panel from the bottom shell



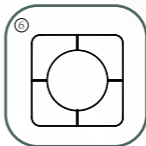
Connect the relevant lead wires in the concealed box to the terminal block specified in the power board according to the wiring diagram.



Fasten the bottom shell to the wall concealed box with screw.



Connect the display board with the power board through the cable socket



Adjust panel installation posture and matching gap, then debug and delivery

Attention

1. The front-end power supply of the thermostat switch should be set up with an independent switch or power socket. The user should cut off the power supply to ensure safety when the control system is not in use .
2. Installation requires professional installation and maintenance personnel to operate, the thermostat switch input circuit should be configured to the front end of the appropriate power switch. After installation, users should be trained on how to use the thermostat and told that the power should be cut off when it is not working.
3. Installation position requires 1.4 metres high from the ground, avoiding direct sunlight on the thermostat, and should shelter from wind and heat sources.
4. Connect the circuit according to the wiring diagram of the bottom shell. If the controller does not match with the equipped installation diagram, please contact the dealer or factory in time.
5. Equip the load according to the marked current, and prohibit overload installation and matching.

Other operations and tips

- High temperature protection tip: When the room temperature is higher than the protection value, the temperature display value starts flashing and the load is automatically switched off. When the indoor temperature is lower than the protection value, the temperature display value stops flashing and the the protection status is cancelled automatically.
- Low temperature protection tip: When the indoor temperature is lower than the protection value, the temperature display value starts flashing and the load turns on automatically. When the indoor temperature is higher than the protection value, the temperature display stops flashing and the protection status is cancelled automatically.
- Temperature sensor failure prompt:
If the sensor is faulty (damaged), E1, E2 will appear on the display interface, and the thermostat will stop working until the fault is eliminated. This code appears represent that the built-in sensor is not detected or the built-in sensor is faulty.The thermostat stops working until the fault is corrected.
- Valve protection function included in the device.



Advanced Settings

Long press \mathcal{S} under power-on condition to enter the working mode setting, press \blacktriangle \blacktriangledown to switch to the next item, and press \odot to confirm and save automatically .


The model uses 001, 002, 003, 004 and 005 to represent five working modes (001-Cooling 002-Underfloor Heating 003-Fan Coil Heating 004-Underfloor & Fan Coil Heating 005-Ventilation)

Long press \mathcal{S} under the state of power off to enter the advanced parameter setting mode, press \blacktriangle \blacktriangledown to change the parameter value, press \mathcal{S} to switch to the next item, and press \odot to confirm and save automatically after adjusting the parameter.

Display code	Option contents (press \mathcal{S} to switch)	Default setting	Press up and down to adjust, \odot confirm to save
H1	temperature compensation	0 C	-9 C ~ +9 C
H2	start-up temperature difference	2 C	0 C ~ 9 C
H3	High temperature protection	45 C	30 ~ 60 C
H4	Low temperature protection	5 C	5 ~ 10 C

Restore factory value: within 20 seconds after switching off the power, press " \blacktriangle " and " \blacktriangledown " at the same time for 5 seconds, the thermostat will be restored to the factory default value. The thermostat will restart and enter the working state after restoring the factory settings and full display.

Network connections

1. Download Tuya APP
2. When the thermostat is turned off, long press ▲ to start pairing.  will keep flashing during the pairing process.
3. App enter the add device page, select the type of product.
4. Input WiFi account and password, then pairing.

TIP:

1. Confirm that WiFi connected to the mobile phone is the same as WiFi entered in the APP.
2. The connected WiFi frequency band is 2.4G (the thermostat does not support 5G at present)

Fault resolution

Fault phenomenon	Possible causes	Measures
No display on thermostat	1. Power line input error or no power input 2. Panel and power board plug port misalignment	1. Check the power cord connection or power input voltage 2. Check the power board, re-insertion
Temperature display is not normal	Check if the compensation correction is correct	Compensation correction in the first item of advanced settings
Short circuit display E1	internal Sensor Failure	Check whether the pins of the internal sensor for are short circuit or disconnected.
Open circuit display E2		

Note:

In order to improve the quality of the product and experience, the product may be updated from time to time, if this note fails to indicate in time, please understand!