



920083PL USER MANUAL

Thermal actuators are mainly used in floor heating systems to control closing and opening of the valves. It is specifically applied to electric drive part of the branch manifold valve, small valve and dynamic balance valve. No noise, fast installation and easy disassembly.

Feature:

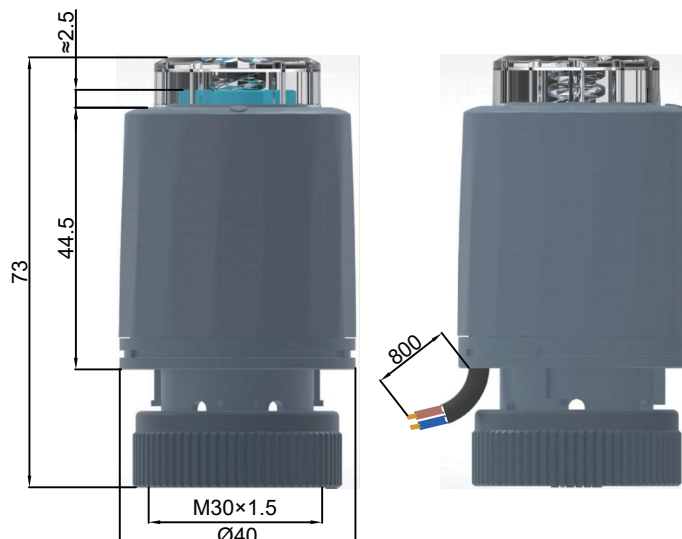
| | |
|--------------------------------|---------------------------------------|
| Compact size, small dimensions | Easy to install |
| Noiseless | Manual opening and position indicator |
| Low power consumption | Full view stroke indication |

Technical parameters:

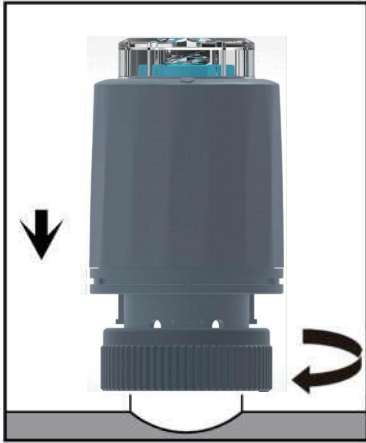
| | |
|--|--------------------------------|
| Control direction: Normally closed | Force: 100±10N |
| Voltage: 12v 24v 230v | Protection grade: IP54 |
| Power consumption: 2W | Working temperature: -5°C-60°C |
| Stroke: ≥4mm | Adapter: M30x1.5mm |
| Closing and opening time: 3-5mins/60-90sec | Cable length: 800MM |
| Standard: EN 60730 | Housing material: PA66+30%GF |

Dimensions:

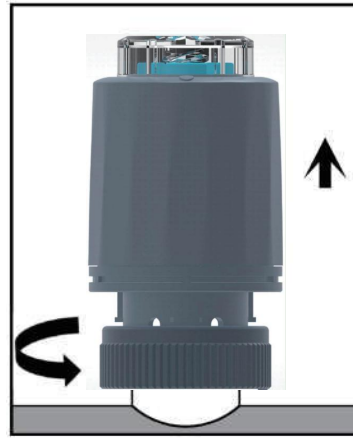
Unit: MM



Installation and disassembly:



Rotate the nut clockwise and install it on the valve (Note: Do not use pipe pliers, clamp and other tools)

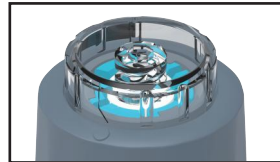


Rotate the nut anticlockwise until remove the actuator (Note: Do not use pipe pliers, clamp and other tools)

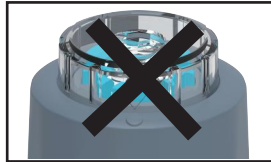
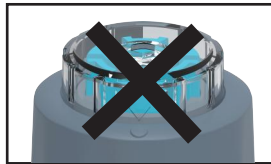
Precautions:

Indication cover confirmation:

≈0mm ✓

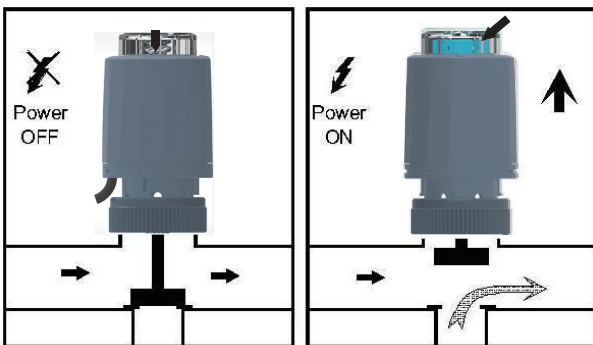


Normal situation

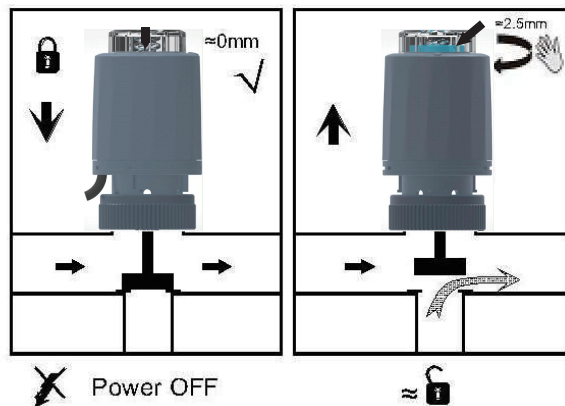


Abnormal situation

Working situation:



N/C Normally closed (power-on/power-off state)



Manual open state