

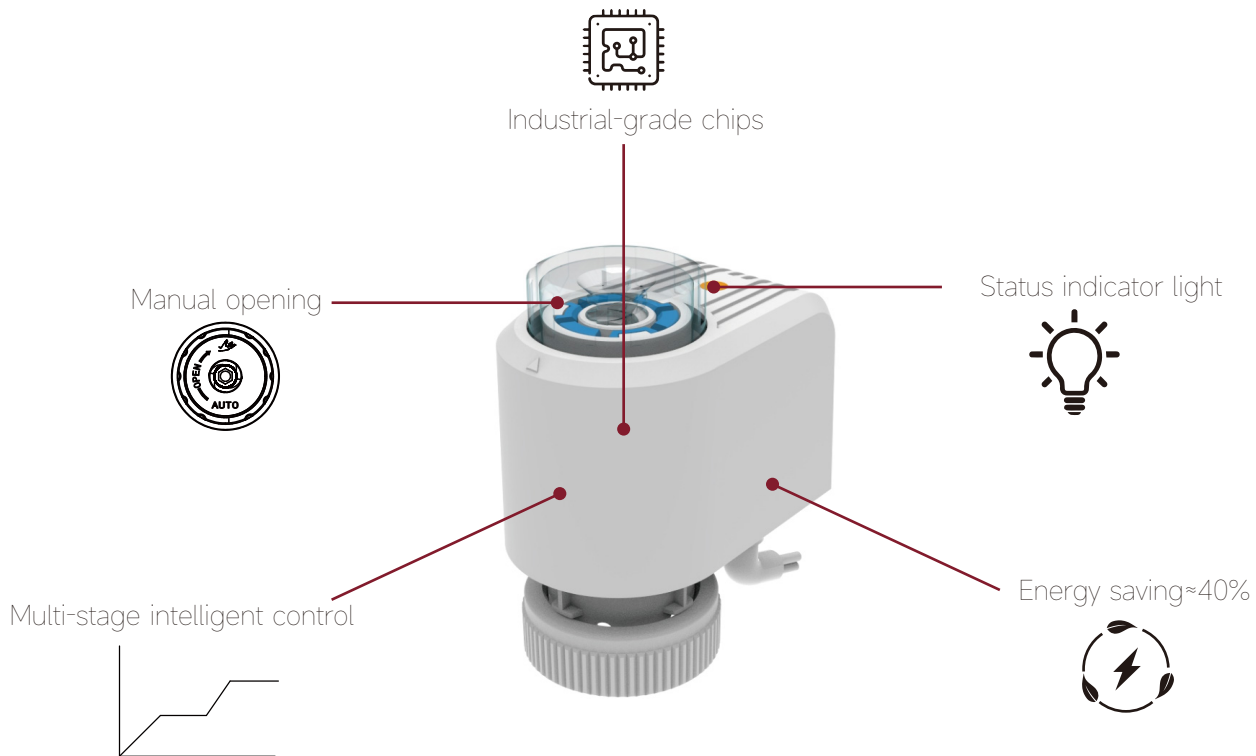
Proportional thermal actuator (0-10V) 920080PL

920080PL is primarily used in HVAC systems, fan coil, and heating&cooling systems. In addition to the basic functions of a conventional normally closed thermal actuator,, the features include multi-stage intelligent control, excellent comfort, more energy saving, and extended equipment life etc.



Feature:

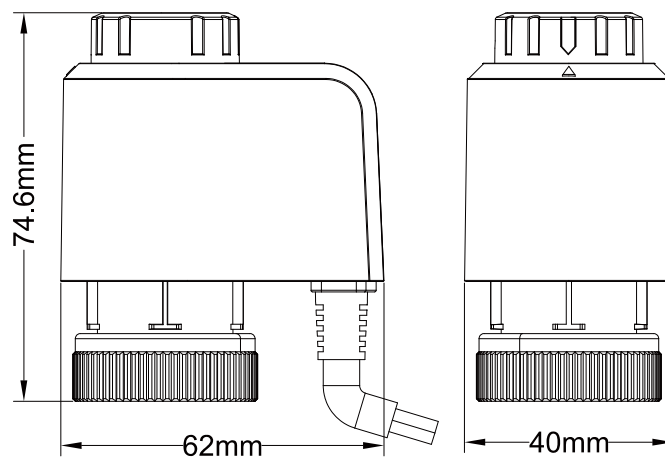
- ✓ Multi-stage intelligent control
- ✓ Manual opening function
- ✓ Removable plug-in
- ✓ Easy to install
- ✓ Low power consumption
- ✓ 24V DC
- ✓ Noiseless
- ✓ Full view stroke indication
- ✓ Maintenance-free



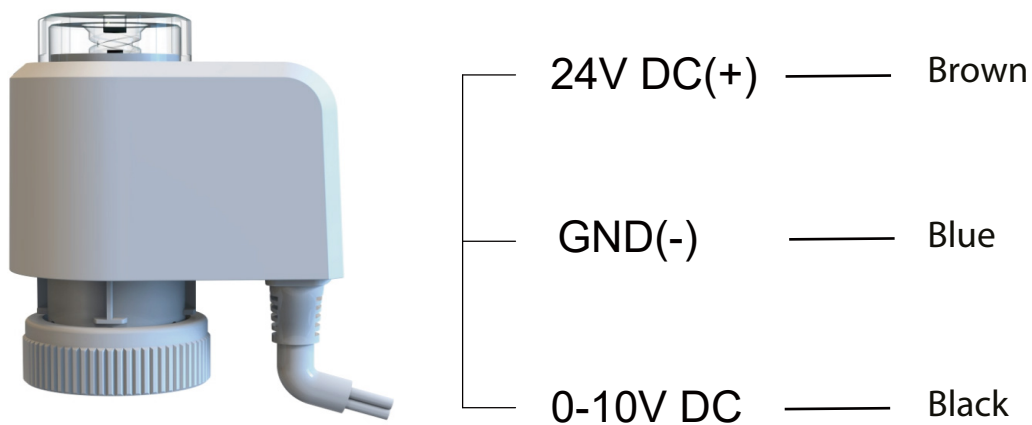
Technical parameters:

- Control direction: Normally closed
- Voltage: 24V DC 50/60Hz
- Cable: 3x0.5mm²-800mm
- Wire connection method: plug-in
- Movement type: Linear
- Standard: EN 60730
- Force: 120±10N
- Response time: 3-5 minutes
- Control mode: Energy saving & comfort mode, heating mode, off
- Adapter: M30x1.5mm
- Power consumption: 2W
- Control Voltage: 0-10V DC
- Maximum starting current: Max.300 mA
- Protection grade: IP54
- Working temperature: 0°C-60°C
- Stroke: ≥4mm
- Housing material: PA66+30%GF

Dimensions:

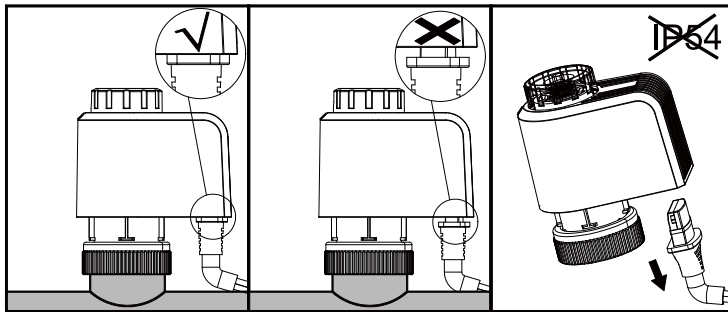
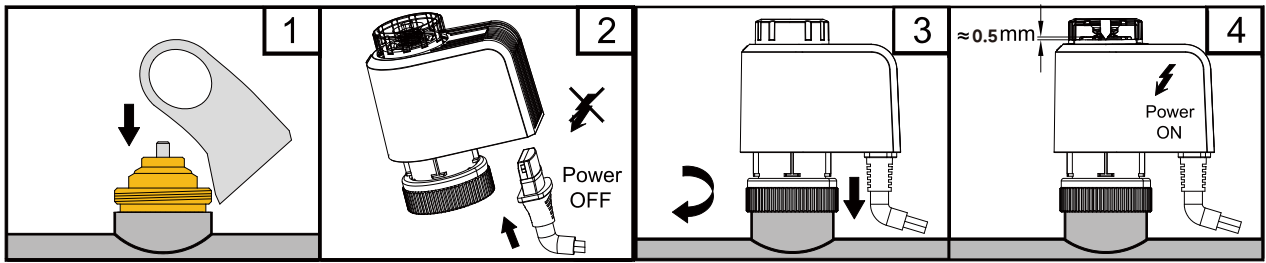


Wiring Diagram



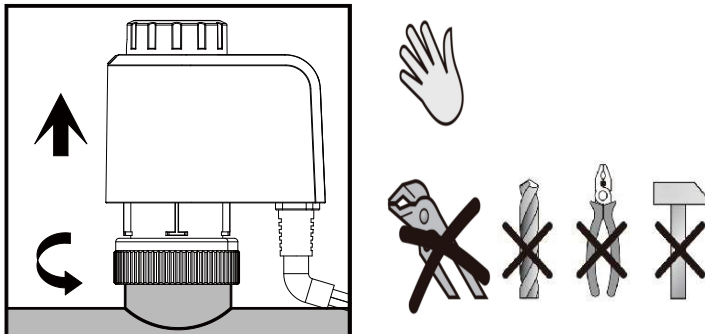
Installation & Disassembly

Installation



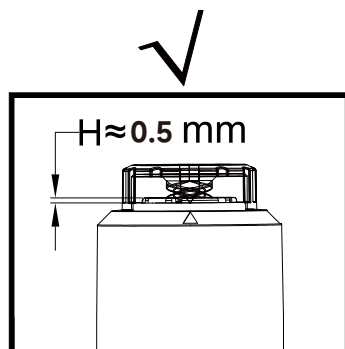
Rotate adapter ring clockwise onto the valve until fix well. (Note: Do not use pipe pliers, clamp and other tools)

Disassembly

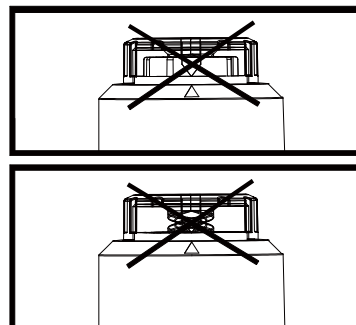


Rotate adapter ring counterclockwise until removed. (Note: Do not use pipe pliers, clamp and other tools)

Status confirmation:

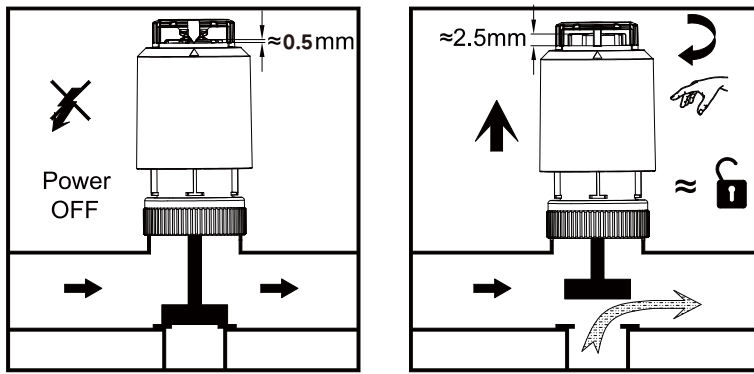


Normal

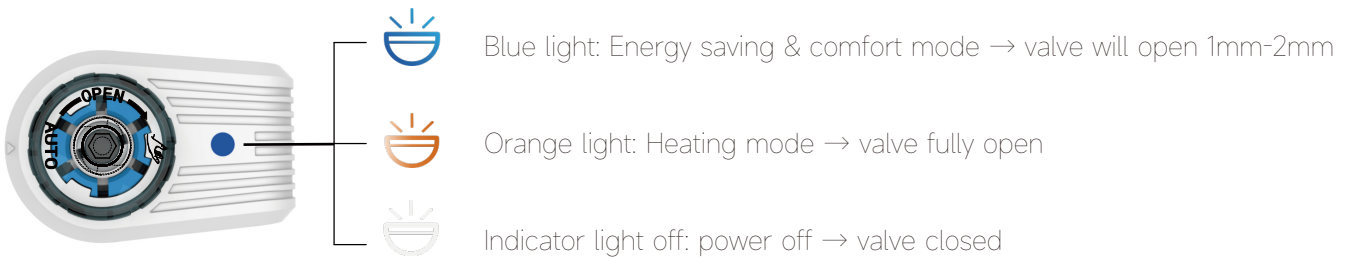
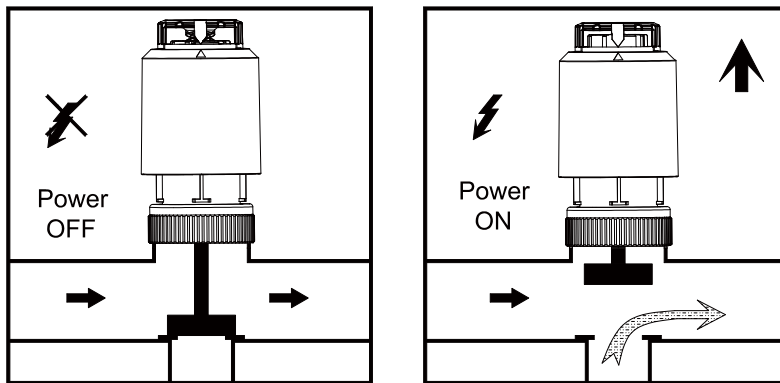


Abnormal

Manual opening Function



Automatic mode



Working curve diagram

